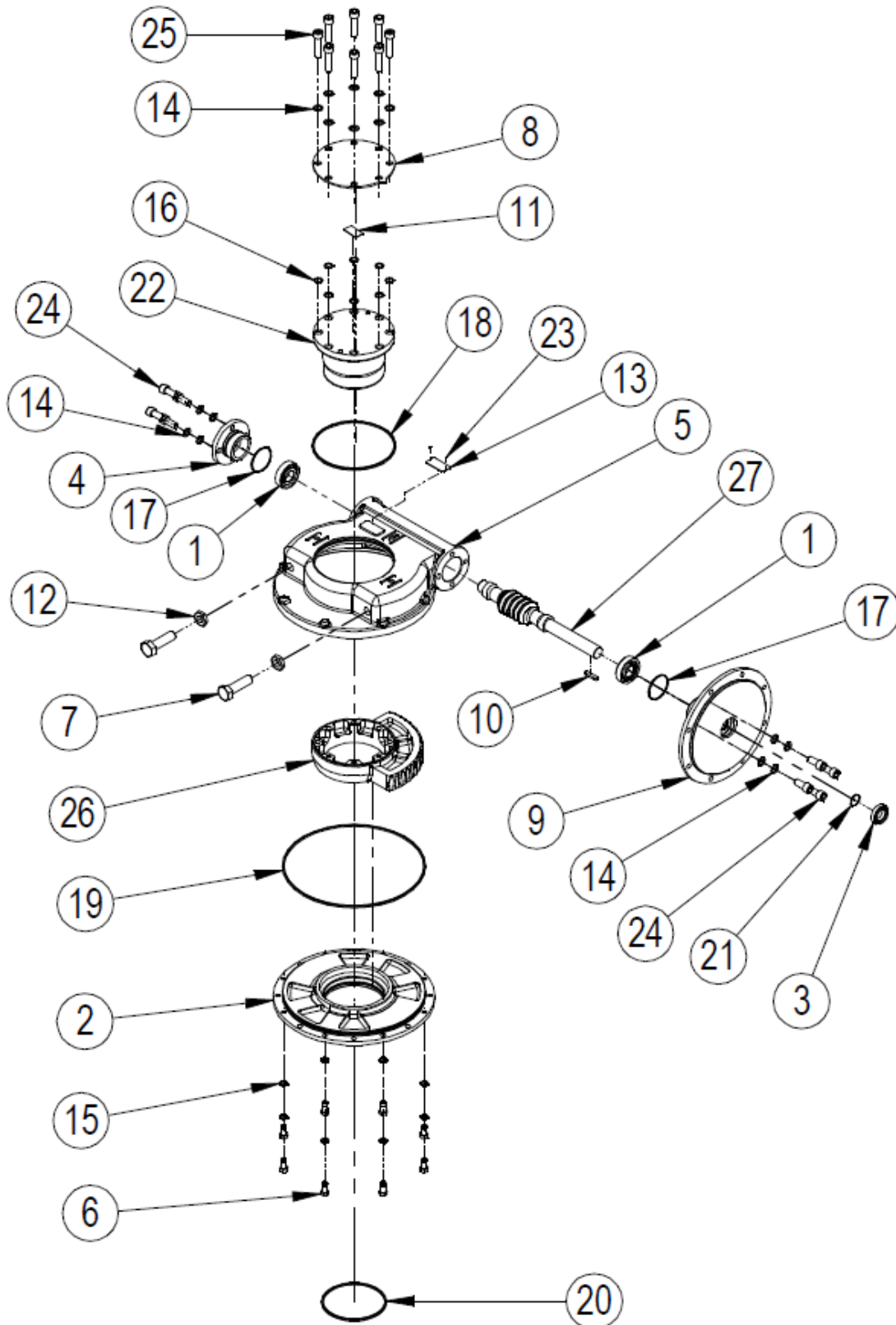


SPARE PARTS LIST FOR IW72 AND IW82 WORM GEAR ACTUATORS



EXPLODED VIEW FOR IW72 AND IW82 GEARBOX OPERATIONS

ITEM	DESCRIPTION	QUANTITY
*1	ANGULAR CONTACT BALL BEARING	2 (4 ON HT, HOW & Manual AWWA units)
2	BASEPLATE	1
*3	BEARING	1 (Units with IR)
4	ENDCAP	1
5	GEARCASE	1
6	SCREW	8
7	SCREW	2
8	INDICATOR PLATE	1
9	INPUT FLANGE	1
10	KEY	1
11	LABEL	1
12	HEXAGON NUT	2
13	NAMEPLATE	1
14	WASHER	16
15	WASHER	8
*16	O RING	8
*17	O RING	2
*18	O RING	1
*19	O RING	1
*20	O RING	1
*21	O RING	1
22	OUTPUT SLEEVE	1
23	RIVET (STAINLESS NAMPLATE ONLY)	2
24	SCREW	8
25	SCREW	8
26	WORMSHAFT	1
27	WORM QUADRANT	1
28	GREASE	

Note: Items marked \* are the recommended spares holding for 5 years operation

Special solid worm wheels do not have output sleeves and screws but do have the same gearbox rating