

rotork®

Keeping the World Flowing
for Future Generations



Actuator Analytics - Report



Rotork Intelligent Asset Management
21 Jul 2022

Actuator Analytics Report



Keeping the World Flowing
for Future Generations

General Information

Actuators Covered: 3

Customer: Example Customer

Report Date: 21 July 2022

Frequency of Reports: Quarterly

Site Name: Example Customer

Analytics Version: V2.0

Report Number: 3

Region: Example Region

Next Review: 30 September 2022

Assets Covered

1C32110103, Z670650101, 1C27340101

Highlights

Serial Number	Health Score (%)	No Action Required	Future Consideration	Action Required
1C32110103	78.9	✓		
Z670650101	58.3		✓	
1C27340101	84.3	✓		

Actuator Analytics Report

General Information

Actuator Model (Type): IQ3 (IQ40)

Customer: Example Customer

Report Date: 21 July 2022

Serial Number: 1C32110103

Site Name: Example Customer

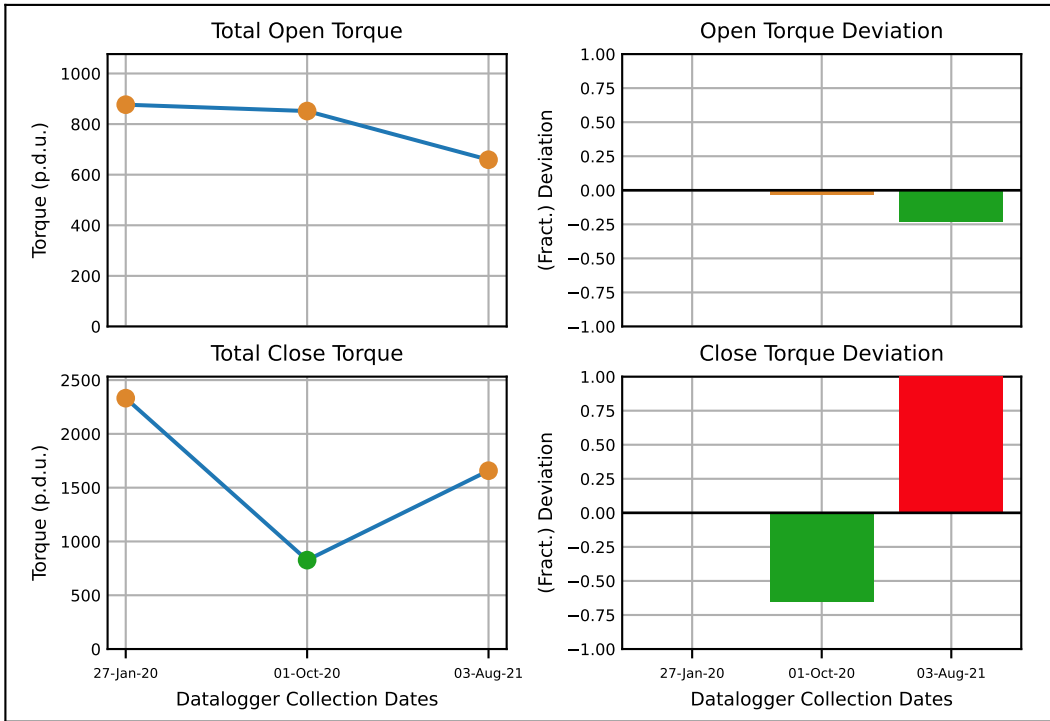
Analytics Version: V2.0

Tag Name: N/A

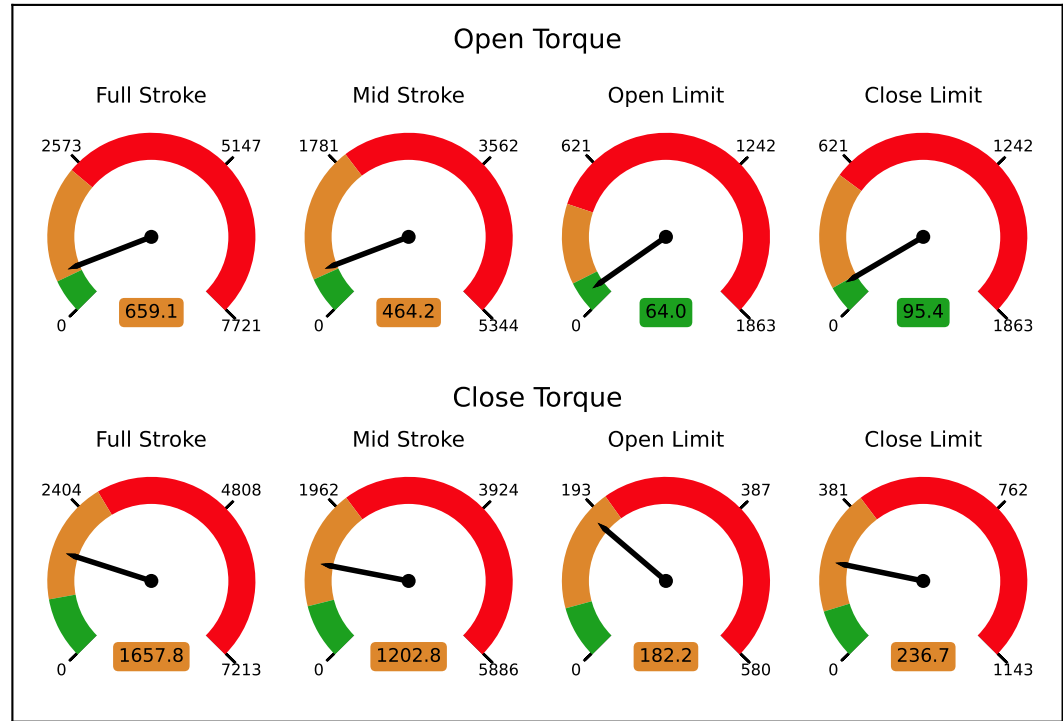
Asset Function: N/A

Next Review: 30 September 2022

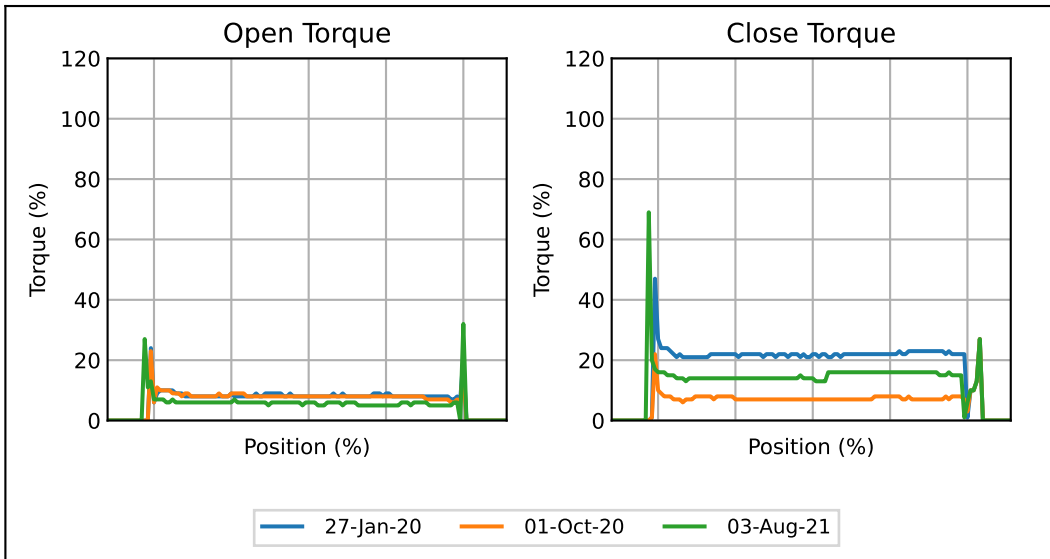
Historical Torque Analytics



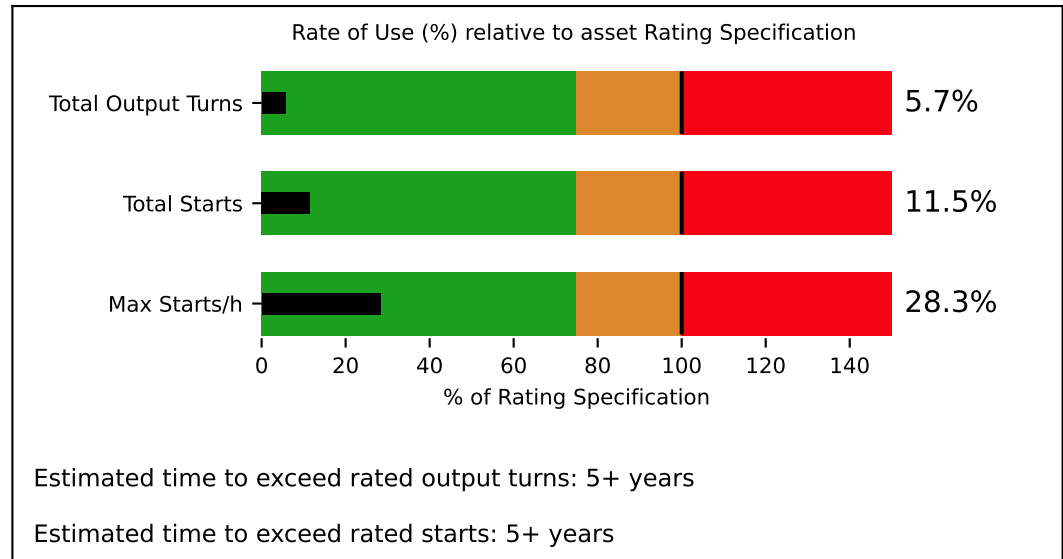
Static Torque Analytics



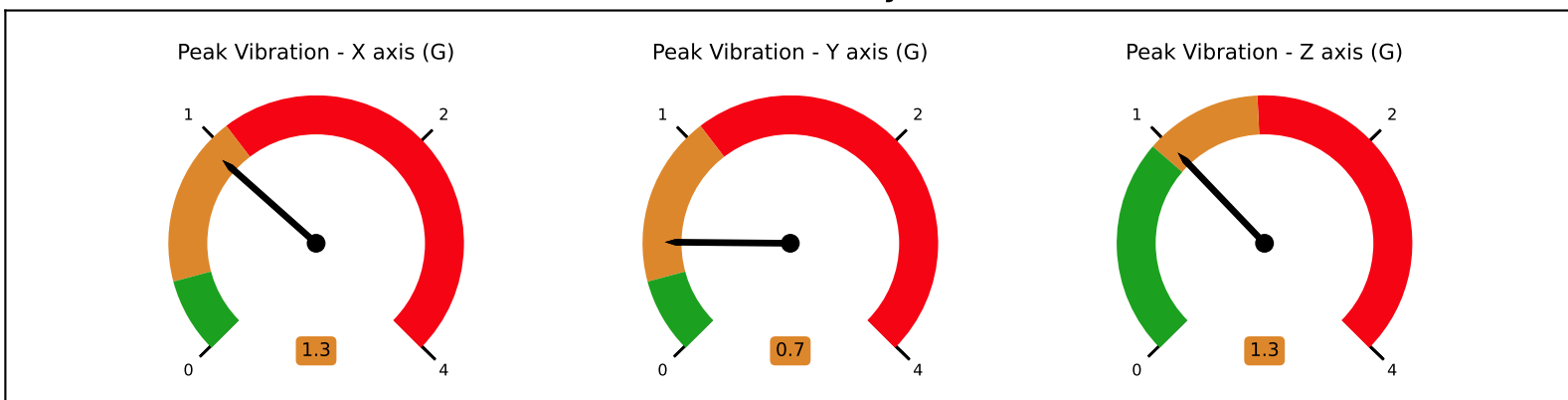
Torque Profiles



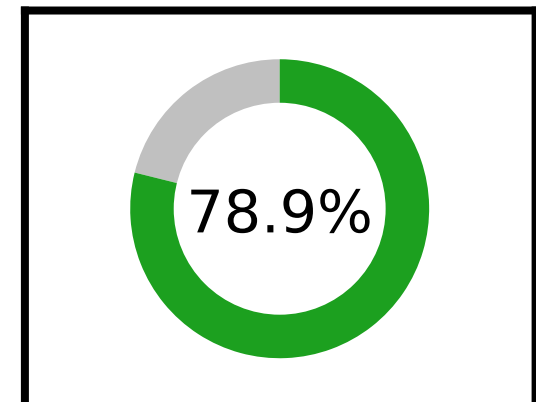
Usage Analytics



Vibration Analytics



Health Score



Usage Statistics

Motor Runtime: 38144.0	Open Starts: 284.0	Close Starts: 291.0	Total Output Turns: 14343.9	Max Starts per Hour: 17.0	Latest Battery Voltage: 9.34
Motor Stalls: 222	Open Torque Trips: 14	Close Torque Trips: 493	Phase Losses: 13	Thermostat Trips: 0	Max Temperature (°C): 54

Comments

Actuator Status : Vibration is elevated. Close Total/Deviation Torque anomaly. Potential Open/Close Torque anomaly. Motor Stall, Close Torque Trip alarms detected

Recommended Corrective Actions : Investigate cause of high vibration and mitigate where possible. Actuator could torque trip or valve could be damaged. Check actuator sizing, drive train lubrication, drive bush and actuator settings; check valve condition. Monitor Torque for increase over time. Inspect motor condition. Check all oil seals for internal leakages

Actuator Analytics Report

General Information

Actuator Model (Type): IQ3 (IQ10)

Customer: Example Customer

Report Date: 21 July 2022

Serial Number: Z670650101

Site Name: Example Customer

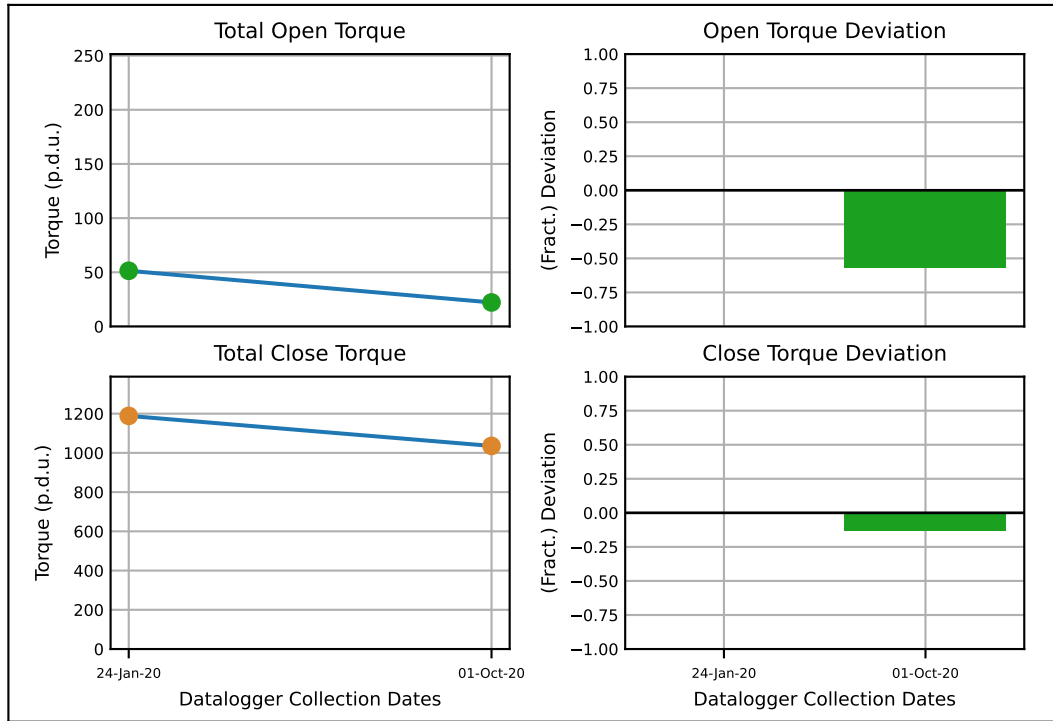
Analytics Version: V2.0

Tag Name: N/A

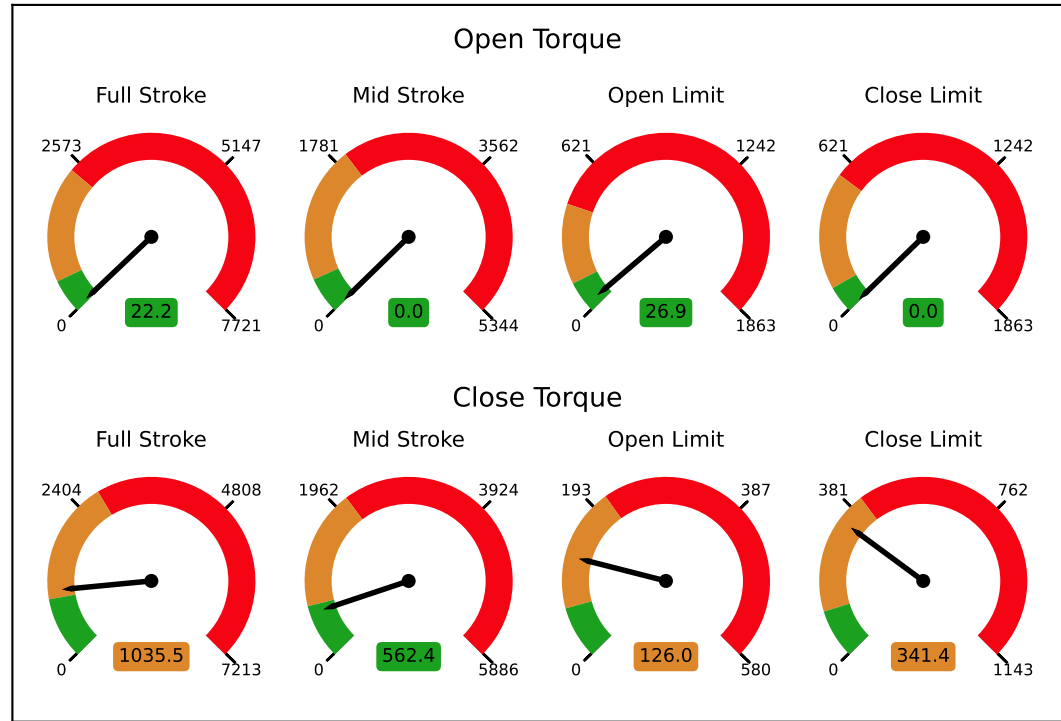
Asset Function: N/A

Next Review: 30 September 2022

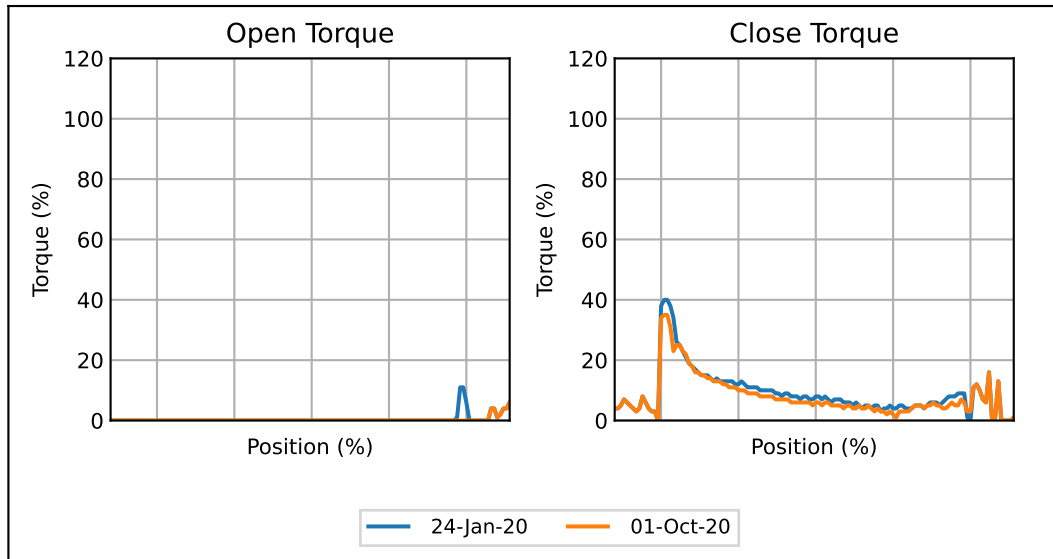
Historical Torque Analytics



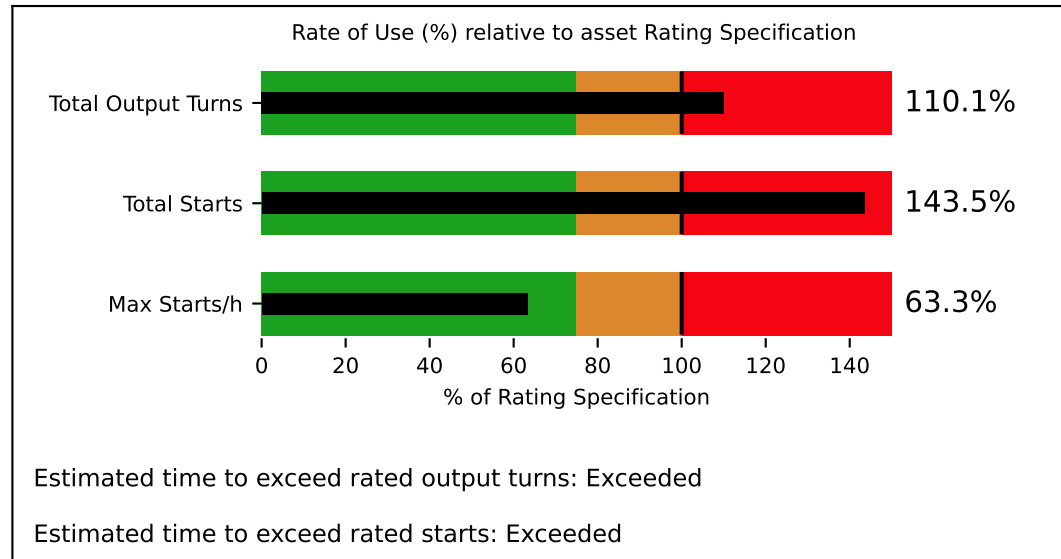
Static Torque Analytics



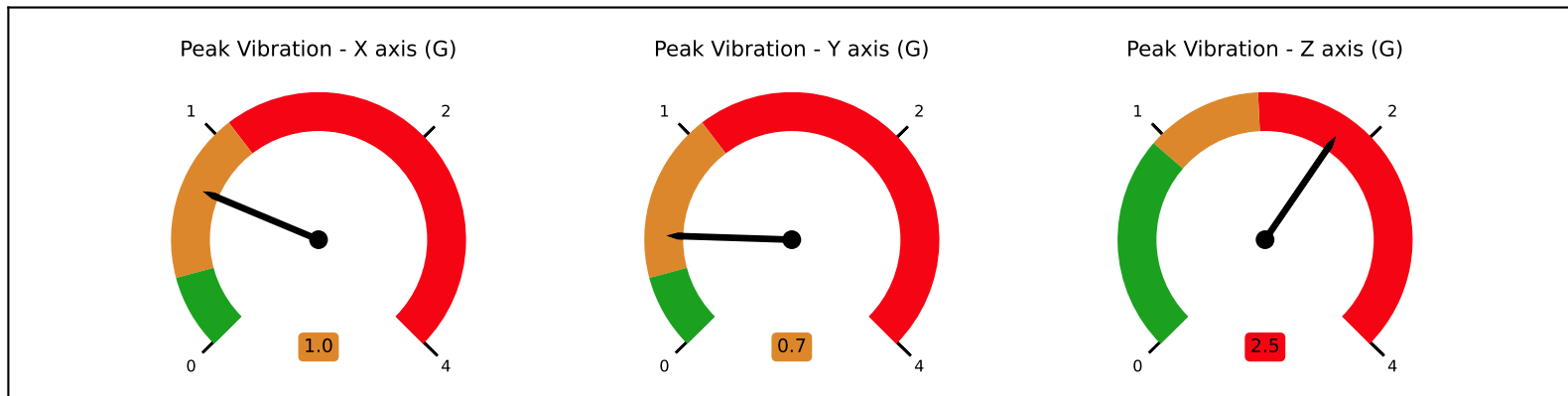
Torque Profiles



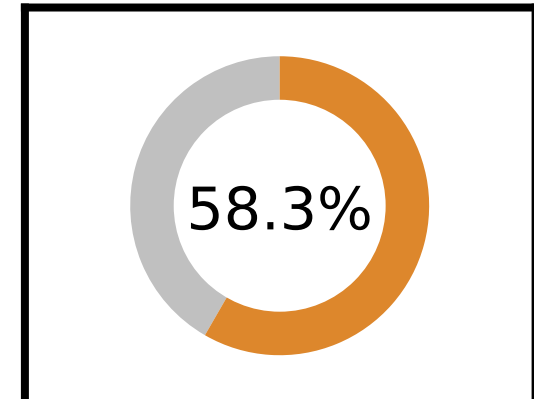
Usage Analytics



Vibration Analytics



Health Score



Usage Statistics

Motor Runtime: 694997.0	Open Starts: 7171.0	Close Starts: 7179.0	Total Output Turns: 550451.3	Max Starts per Hour: 38.0	Latest Battery Voltage: 9.28
Motor Stalls: 0	Open Torque Trips: 0	Close Torque Trips: 0	Phase Losses: 0	Thermostat Trips: 0	Max Temperature (°C): 55

Comments

Actuator Status: Potential Temperature anomaly. Actuator has exceeded its rated number of Starts. Actuator has exceeded its rated number of Output Turns. High Peak Vibration detected. Potential Open/Close Torque anomaly.

Recommended Corrective Actions: Check temperature trend data for frequent high temperature events, if seen check oil seals for internal leakages. Immediate actuator inspection required. Evaluate for actuator overhaul/replacement. Investigate methods to reduce peak vibration. Ensure actuator/valve are securely mounted. Monitor Torque for increase over time

Actuator Analytics Report

General Information

Actuator Model (Type): IQ3 (IQ10)

Customer: Example Customer

Report Date: 21 July 2022

Serial Number: 1C27340101

Site Name: Example Customer

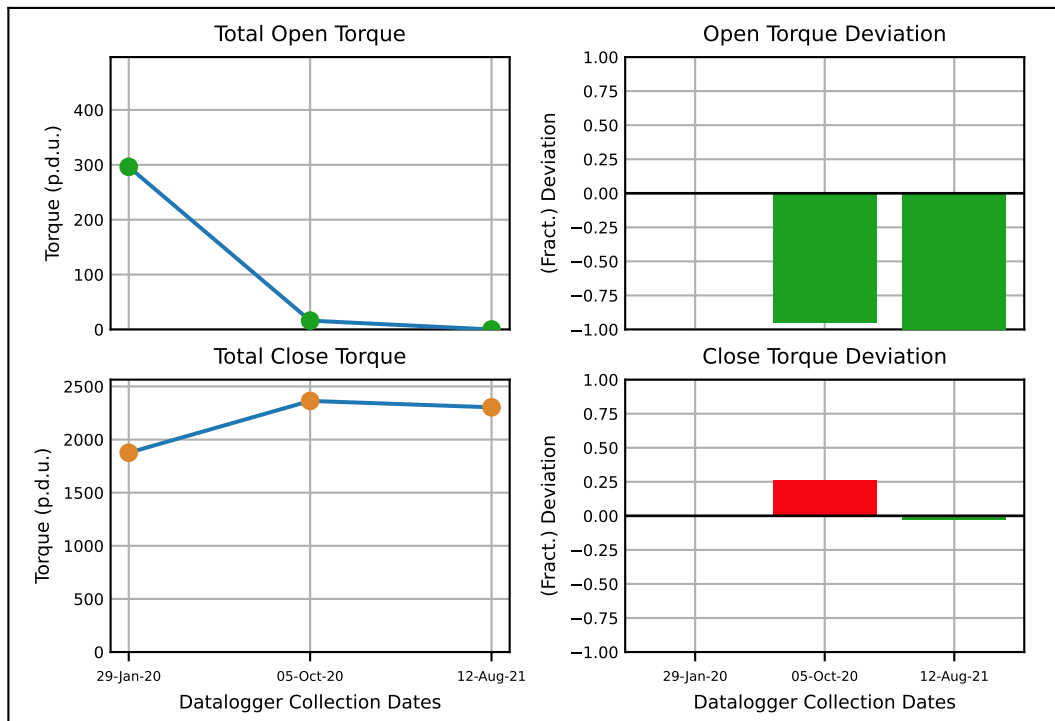
Analytics Version: V2.0

Tag Name: N/A

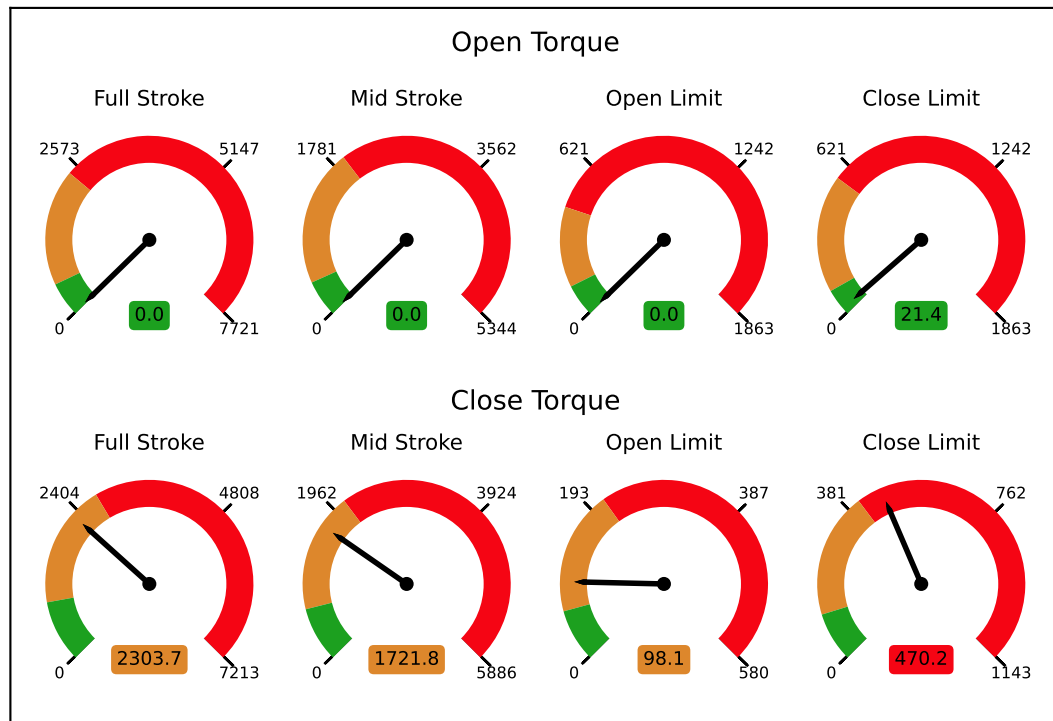
Asset Function: N/A

Next Review: 30 September 2022

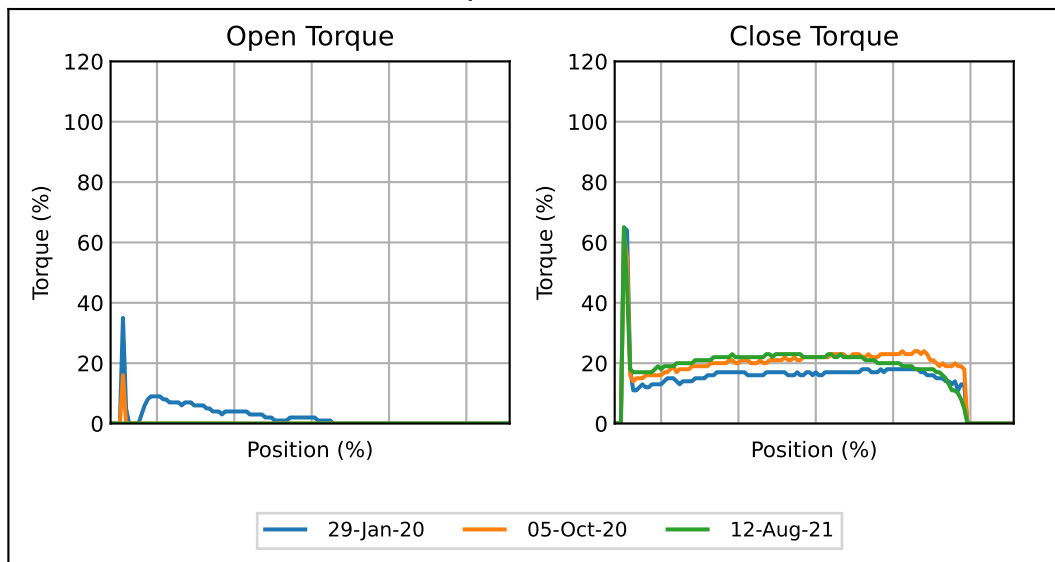
Historical Torque Analytics



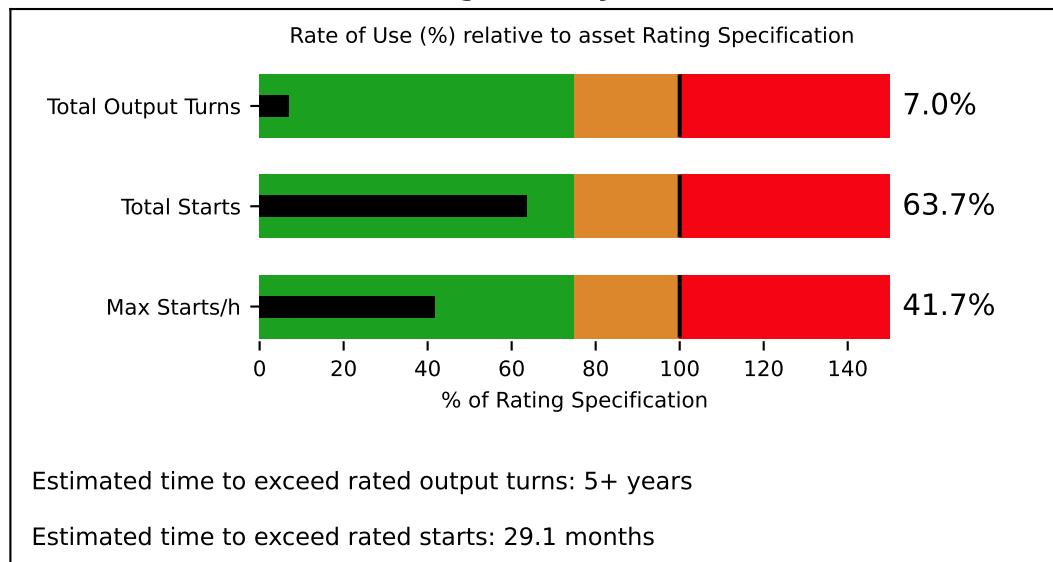
Static Torque Analytics



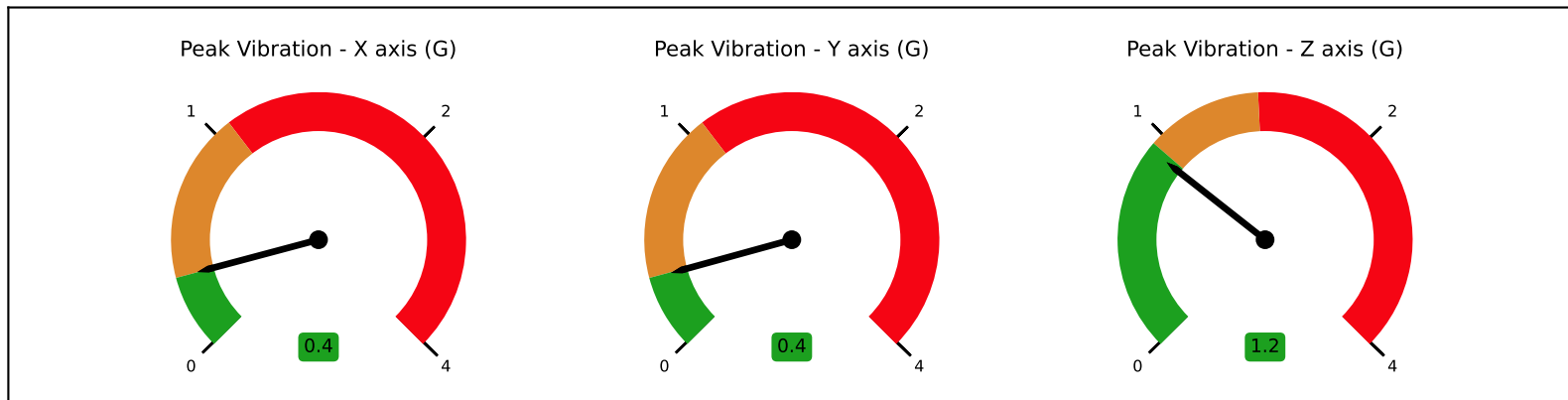
Torque Profiles



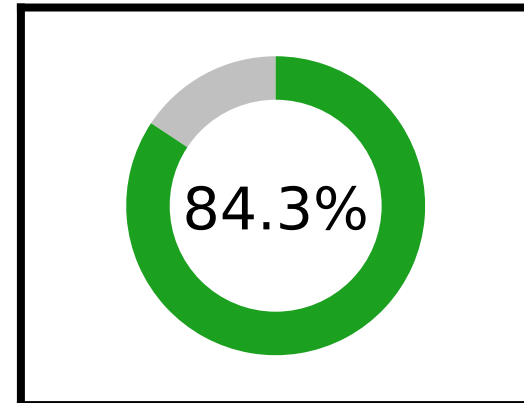
Usage Analytics



Vibration Analytics



Health Score



Usage Statistics

Motor Runtime: 120123.0	Open Starts: 3174.0	Close Starts: 3200.0	Total Output Turns: 35240.8	Max Starts per Hour: 25.0	Latest Battery Voltage: 9.03
Motor Stalls: 0	Open Torque Trips: 0	Close Torque Trips: 627	Phase Losses: 0	Thermostat Trips: 0	Max Temperature (°C): 53

Comments

Actuator Status: Potential Close Peak Torque anomaly at Close Limit. High Close Torque has been detected. Close Torque Trip alarms detected.
Recommended Corrective Actions: Check close limit position. Actuator could torque trip or Valve could be damaged. Check actuator sizing, drive train lubrication, drive bush and actuator settings; check valve condition

rotork®

Keeping the World Flowing
for Future Generations



www.rotork.com

A full listing of our worldwide sales and
service network is available on our website.

Rotork plc
Brassmill Lane, Bath, UK

tel +44 (0)1225 733200
email mail@rotork.com