

GENERAL DESCRIPTION

The MT-6400 Remote Readout provides position indication of Jordan Controls actuators, position feedback transmitters or any 1000 ohm potentiometer feedback device.



FEATURES

- Large digital display
- Calibrated to display 0 - 100, or process range
- Universal input: 90 - 240 Vac, 50/60 Hz
- Built-in 24 Vdc supply provides reference voltage for 1000 ohm feedback potentiometer normally used in actuators for position indication, or powers 4-20 mA process input.

SPECIFICATIONS

Signal input: 1000 ohm potentiometer or 4-20 mA

Meter: Standard $\pm 2\%$ meter calibrated 0 to 100

Calibration: Front panel bushbutton calibration

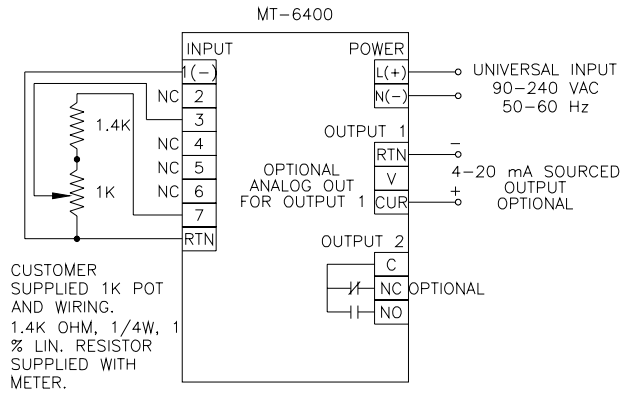
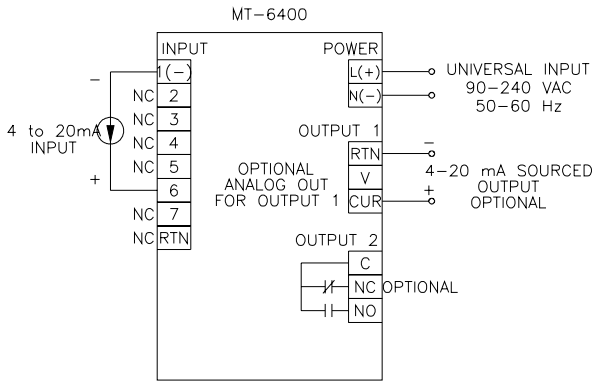
MT-6400 SERIES SELECTION CHART

			Selection
Basic Model	MT-6410	Position indicator, panel mount, NEMA 4 front bezel	
	MT-6420	Position indicator, panel mount with actuator control switch panel mounted	
Signal Input	P:	1000 ohm potentiometer (by user) using 24 Vdc ecitation from meter	
	M:	4 to 20 mA signal	
Meter Readout	D:	Display of process input, 4 to 20 or 0-10 (for pot input)	
	P:	Percentage of process input 0-100	

MT-6400 STANDARD OPTIONS

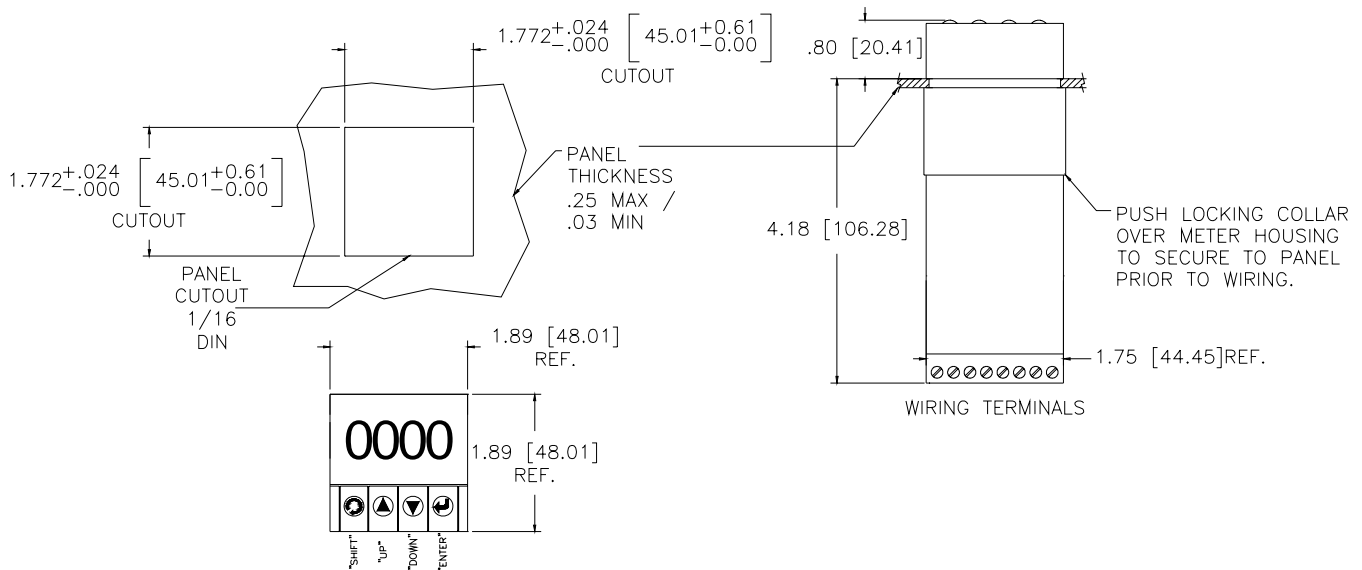
Code	Description	Selection
Special Electrical Options		
X022	Form C relay contact and powered retransmission of process input for MT-6400	
X023	Special control outputs for MT-6400	

TYPICAL WIRING DIAGRAMS



MAJOR DIMENSIONS

INCHES
(MILLIMETERS)



These dimensions are subject to change without notice and should not be used for preparation of drawings or fabrication of installation mounting. For current installation manuals and other product information, see www.jordancontrols.com.